

[www.aps-group.co.uk](http://www.aps-group.co.uk)

bespoke window & door  
systems created with  
intelligent technology

# Innovative Systems



Performance Window  
**AP134 Therm+**

**aps**

aluminium & plastics systems

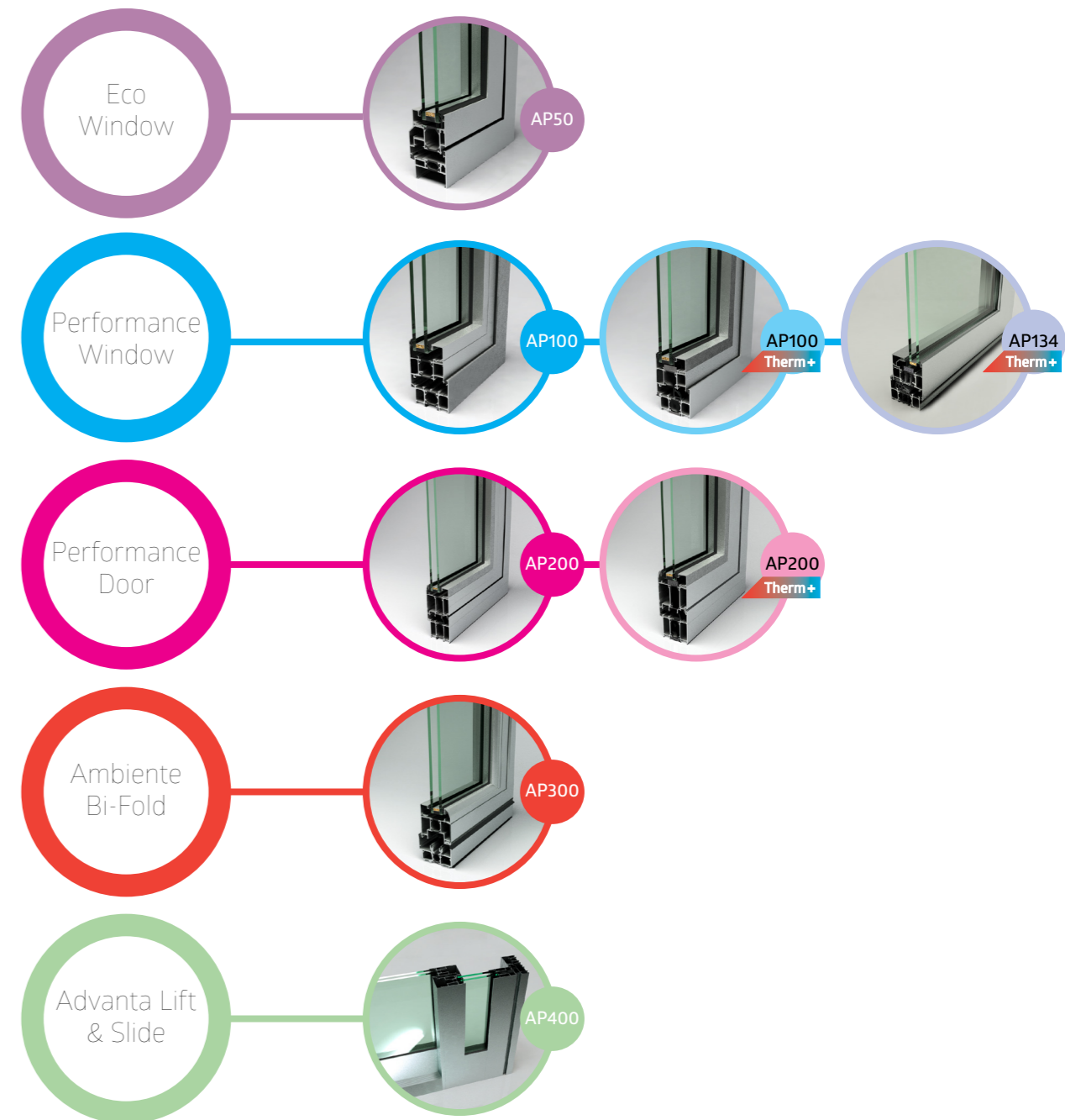
# Flexible innovative solutions High performance systems

APS is a leader in the design and manufacture of architectural aluminium glazing systems for the commercial construction industry. We offer a comprehensive range of systems from curtain walling to windows and doors, with an extensive

list of accessories and options. Based in Northern Ireland we extensively distribute throughout the UK and Ireland and we pride ourselves on technical design, developing and delivering an innovative product and service.



## Polyamide Range



# Performance Window AP134 Therm+

**Weather**  
BS6375 Pt1:2015 + A1:2016

**Operational Forces**  
BS6375 Pt2:2009

**Basic Security**  
BS6375 Pt3:2009 + A1:2013

**Enhanced Security**  
PAS24:2016

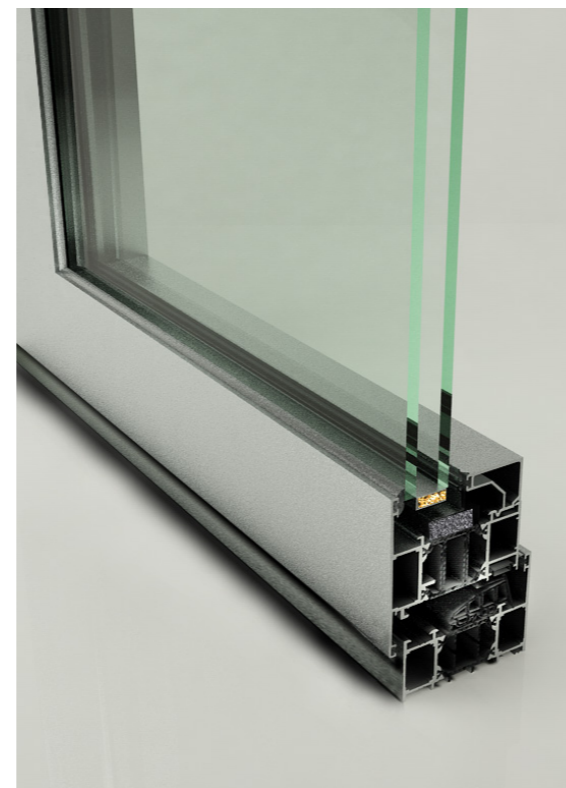
**Type:** Extruded aluminium alloy profiles, which incorporate a 34mm polyamide thermal break barrier across the AP134 Therm+ which is thermal enhanced for increased performance.

**Material:** Profiles extruded from aluminium alloy 6063 T6 and T5 to BS EN 12020-2:2001/BS7559:2001

**Finish:** Polyester powder coated, minimum thickness 60 microns to BS6496

**Colour:** choose from any colour across the RAL range.

## Therm+



## Performance Window AP134 Therm+

**Testing:**

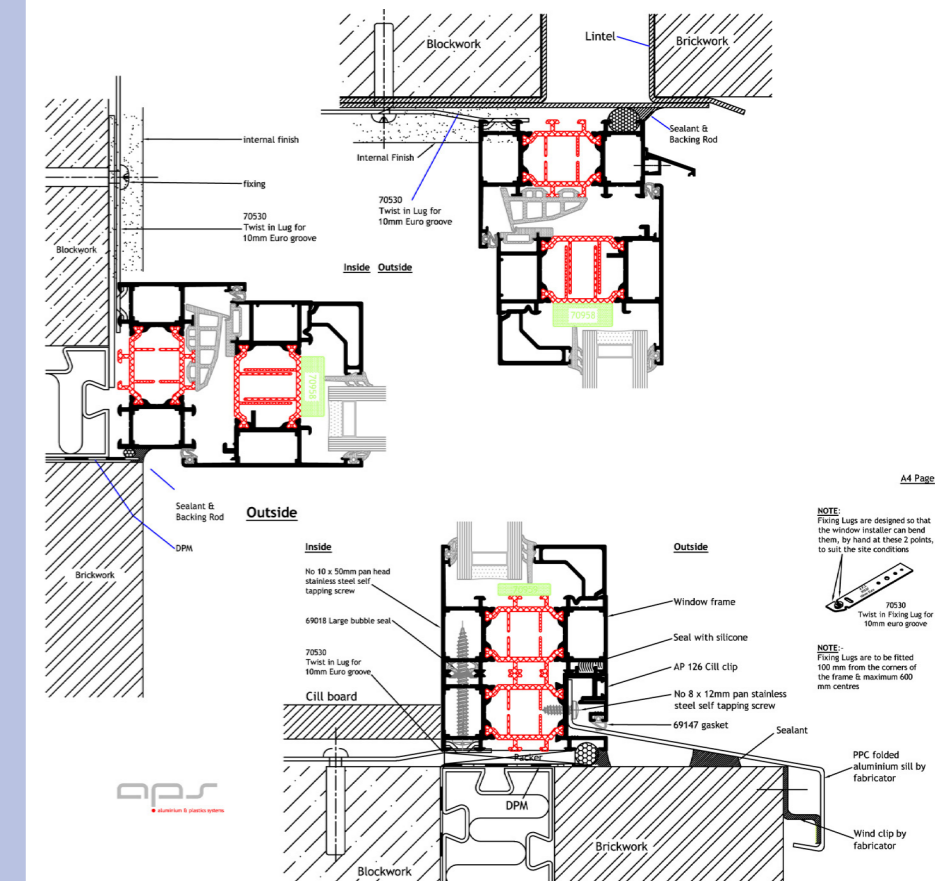
Water tightness	1500pa Class E 1500
Air permeability	600pa Class 4
Water penetration	Zero
Wind resistance	2400pa Class CE 2400
Window safety	3600pa

Classification according to Table 1 of BS6375-1:2015 + A1:2016

**Energy Performance:**  
The AP134 Therm+ is an enhanced insulated polyamide window system, which also compartmentalizes the profile to act as insulated thermal pockets to enhance the window systems thermal efficiency.

**Glass:**  
System can accommodate 28mm double glazing to 54mm triple glazed for maximum efficiency.

Illustration  
AP134 Therm+



---

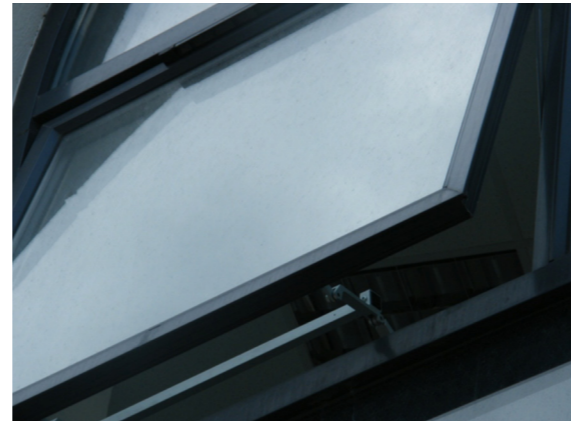
## Windows

Top hung - open out  
Bottom Hung - open in  
Side hung - open out  
Side hung - open in  
Tilt and turn  
Lockable cockspur handles  
Multi-point espangnolette lockable handles  
Tilt and turn gearing and handles  
Folding cam openers  
Electrical Actuators

## Doors

Multi point locking with Rhino bolts  
Emergency exit push bars + external access  
Emergency exit touch + external access  
Heavy duty restrictors  
Low rise threshold

---



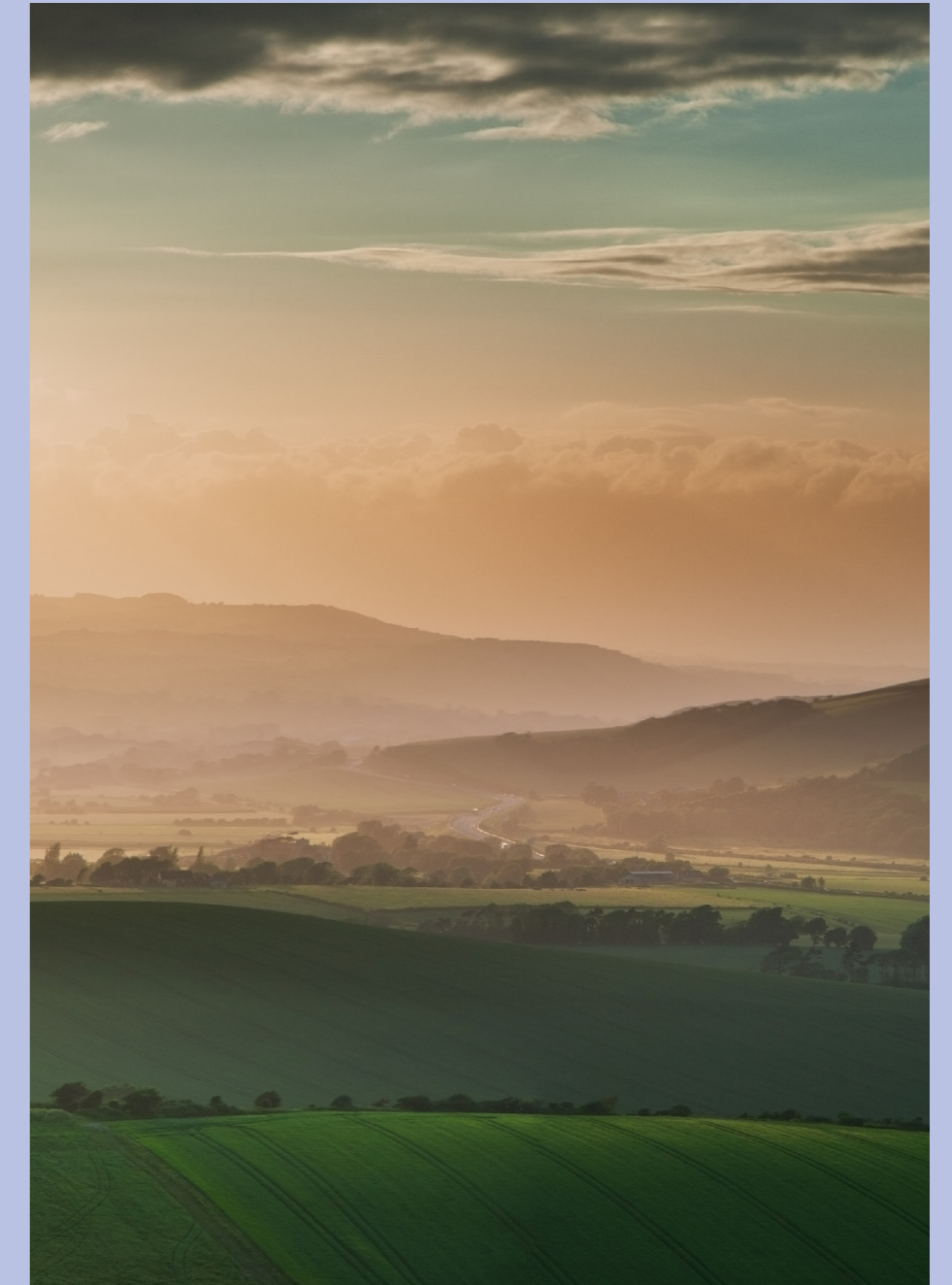
---

## Sustainability and Commitment

APS takes its environmental responsibility seriously. We believe in reducing our impact and carbon foot print, which applies to our suppliers and our clients. We are accredited with ISO14001 and operate an environmental management system.

**Material:**  
In terms of sustainability, aluminium is one of the best materials available. Its natural strength, lightness and durability makes it the ideal material for meeting architectural glazing requirements.

For our own production, we use recyclable aluminium billet 100% of the time and all production waste is recycled. Our extrusions carry a life expectancy of over 50 years. Significantly higher than other materials and of course, it's 100% recyclable.



[www.aps-group.co.uk](http://www.aps-group.co.uk)

bespoke window & door  
systems created with  
intelligent technology



25-27 Enterprise Crescent, Ballinderry Road, Lisburn, County Antrim, BT28 2BP  
**Telephone:** 028 9266 0500 **Fax:** 028 9262 9491